

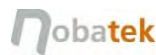


BUILT2SPEC

Tools for the 21st Century Construction Worksite

Boosting construction practices through a new set of technologies

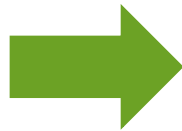
www.built2spec-project.eu



This project has received funding from the European Union's Horizon 2020 research and innovation programme under grant agreement No 637221. This publication reflects the views only of the author, and the Commission cannot be held responsible for any use which may be made of the information contained therein.

Objective

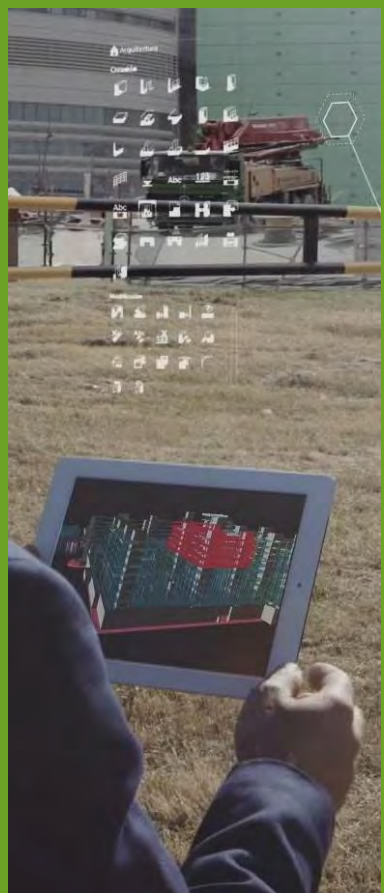
Reduce the energy performance gap between a building's designed and as-built energy performance.



**Self-Inspection, 3D Modelling,
Management and Quality-Check Tools
for the Construction Worksite**



Portable and easy to use!



Funded by the European Union's Horizon 2020 research and innovation programme

Coordinator: 

Start: January 2015

Duration: 4 years

20 European partners:

Universities, research institutions and technological centers, industrials and SMEs from France, Germany, Spain, Ireland, Netherlands, Italy, Switzerland and Great Britain



Tools & Topics

 Energy efficiency quality checks

 Indoor air quality tools

 3D and imagery tools

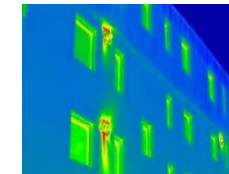
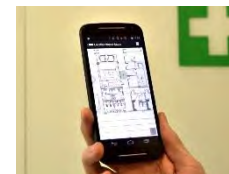
 Smart building components

 Building Information Modelling









 Acoustic tools

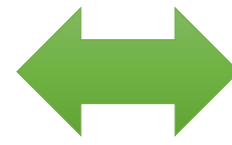
 Airtightness test tools

 Thermal imaging tools






-  Energy efficiency quality checks
-  Indoor air quality tools
-  3D and imagery tools
-  Smart building components
-  Building Information Modelling
-  Acoustic tools
-  Airtightness test tools
-  Thermal imaging tools



Virtual Construction Management Platform

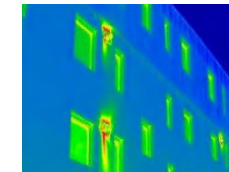
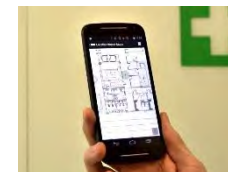
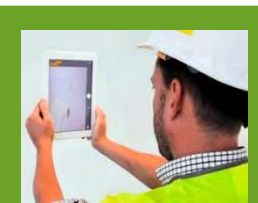


Tools & Topics

Energy efficiency quality checks

We compile and further develop the know-how of various experts within and outside the consortium.

The result will be an easily usable **expert tool to guarantee high quality construction work.**

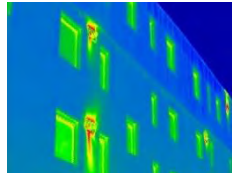
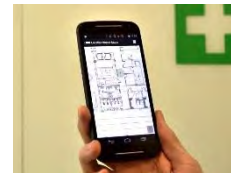


Tools & Topics

Indoor air quality tools - identify pollution and track its source!

Measuring indoor air quality from the worksite to the exploitation of the building with a **portable and fast analyzer!**

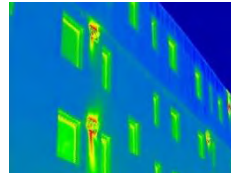
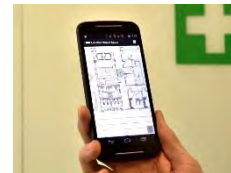
Built2Spec will develop a portable version of BLUE analyzers, designed for field operation by a construction technician.



Tools & Topics

3D and imagery tools

Built2Spec combines **passive and active 3D capture methods** which can be used to 3D reconstruct a large variety of scenes!

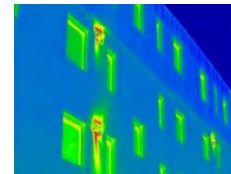
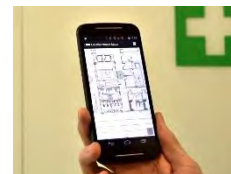
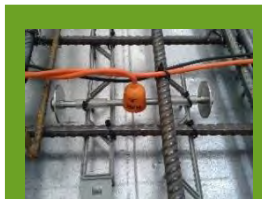


Tools & Topics

Smart building components

A novel use of **embedded sensors in precast elements!**

Continuously monitor both the thermal and structural performance of the building.



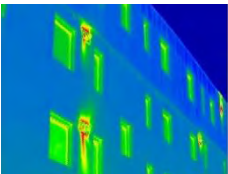
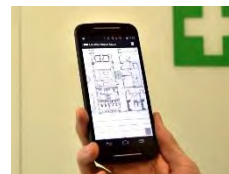
Tools & Topics

Building Information Modelling (BIM)

Stretching the potential of BIM to the construction site and beyond!

In Built2Spec we use the information in BIM to **check whether the as-built situation complies with the design.**

Not just **after the project** is delivered but also **during the construction process!**





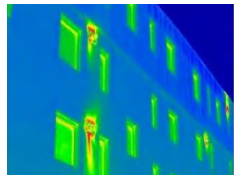
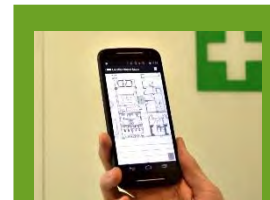
Tools & Topics

Acoustic tools

Minimize costs, make this technology more portable and automate its use!

The aim is to develop a novel lightweight sound source for acoustic testing

-  with a more diffuse field than standard loudspeakers
-  ensuring easy portability and regulation compliance



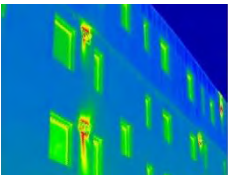
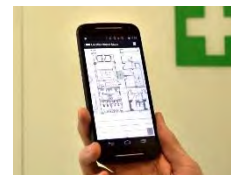
Tools & Topics

Airtightness test tools

Quick checks (<1min) by generating and analysing a **low pressure pulse** from an autonomous unit that **doesn't penetrate the building envelope**.

A portable and easy to use solution.

Construction workers can undertake airtightness assessments themselves!

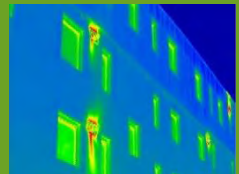
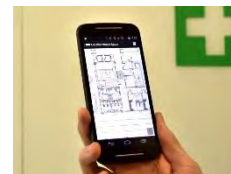


Tools & Topics

Thermal imaging tools

Methods to allow **quantified assessment of thermal properties of buildings** thanks to TIR devices.

These methods rely on Augmented Reality to acquire data directly in the model and indirect as well as direct thermal modeling to analyze it.



Tools & Topics

Virtual Construction Management Platform (VCMP)

- connected to all tools

 BIM-enabled

 Installation guidelines

 3D models

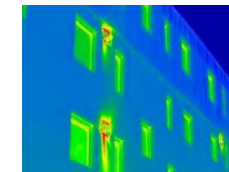
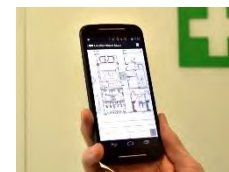
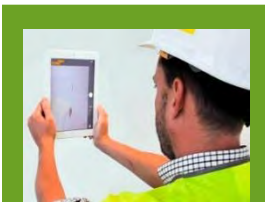
 Training information

 Cloud-based

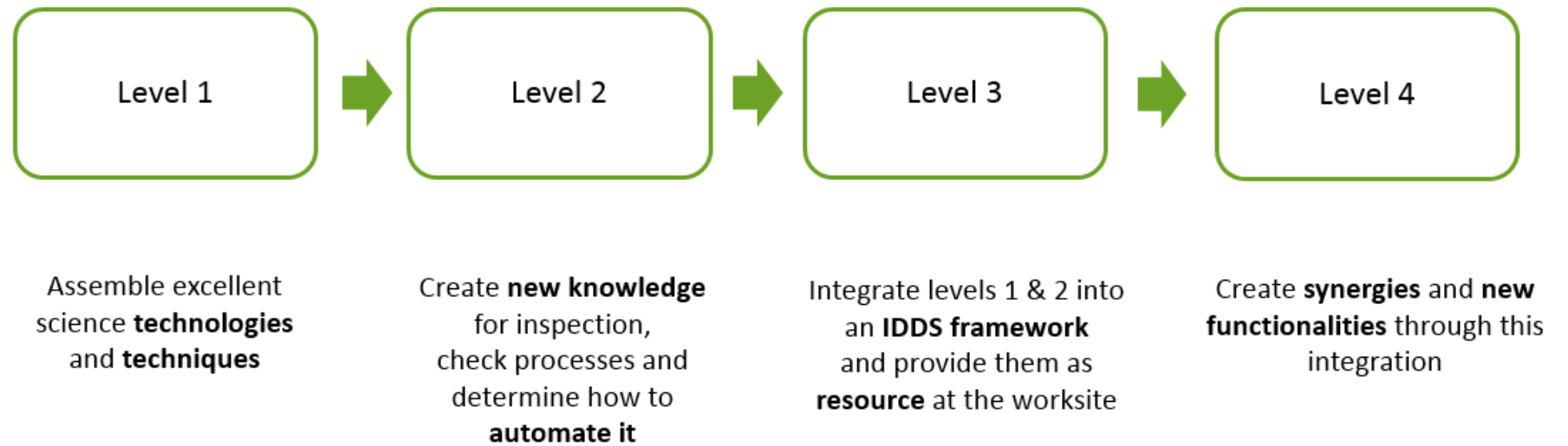
 Information on regulatory frameworks

 Workflow / status

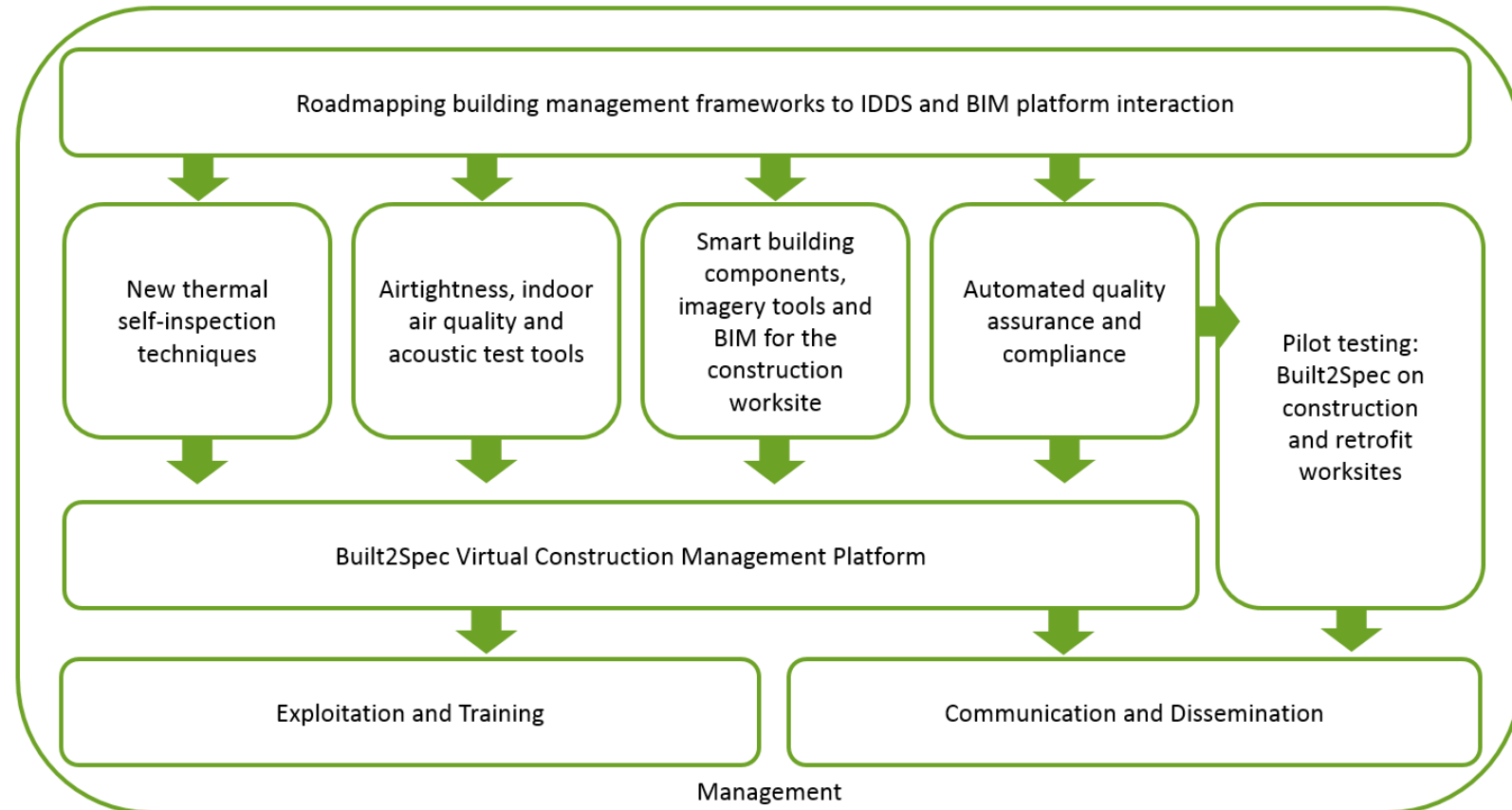
 Product data sheets



What is the project concept?



Project structure



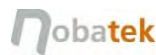


BUILT2SPEC

Tools for the 21st Century Construction Worksite

Boosting construction practices through a new set of technologies

www.built2spec-project.eu



This project has received funding from the European Union's Horizon 2020 research and innovation programme under grant agreement No 637221. This publication reflects the views only of the author, and the Commission cannot be held responsible for any use which may be made of the information contained therein.

Photo Credits

